

**EDUCATION PARTNERSHIPS COALITION OF MINNESOTA (EPC)**

# **EPC of MN @ MN P20**

## **Organizational and Project Overview**

Denise Smieja, Director of Data Leadership  
John Fanning, Director

**Our children succeed in school and in life. Our communities thrive. Our state is equitable and prosperous for *ALL*.**



# EDUCATION PARTNERSHIPS COALITION OF MINNESOTA (EPC)

## AGENDA:

- An organizational overview
- An overview of projects
- Opportunities for questions and discussion

# EDUCATION PARTNERSHIPS COALITION OF MINNESOTA (EPC)

## AGENDA:

- **An organizational overview**
- An overview of projects
- Opportunities for questions & discussion



Our children succeed in school and in life. Our communities thrive. Our state is equitable and prosperous for *ALL*.

# EPC VISION

Our children succeed in *school* and in *life*.

Our *communities* thrive.

Our state is *equitable* and prosperous for *ALL*.

# EPC MEMBER ORGS

<b>Austin</b>	<b>Austin Aspires</b>
<b>North Minneapolis</b>	<b>Northside Achievement Zone</b>
<b>Northfield/Faribault/Rice County</b>	<b>Healthy Community Initiative</b>
<b>Red Wing/Goodhue County</b>	<b>RiseUp Red Wing</b>
<b>Rochester</b>	<b>Cradle 2 Career</b>
<b>Saint Paul</b>	<b>Saint Paul Promise</b>
<b>St. Cloud</b>	<b>United Way of Central MN/Partner for Student Success</b>
<b>St. Louis Park</b>	<b>Children First/Park Partnership for Success</b>
<b>Twin Cities Metro</b>	<b>Generation Next</b>

# **EPC LOCAL PARTNERS**

**600+ across the state, including schools and school districts, diverse post-secondary institutions, local government agencies, non-profit and for-profit organizations, and more!**

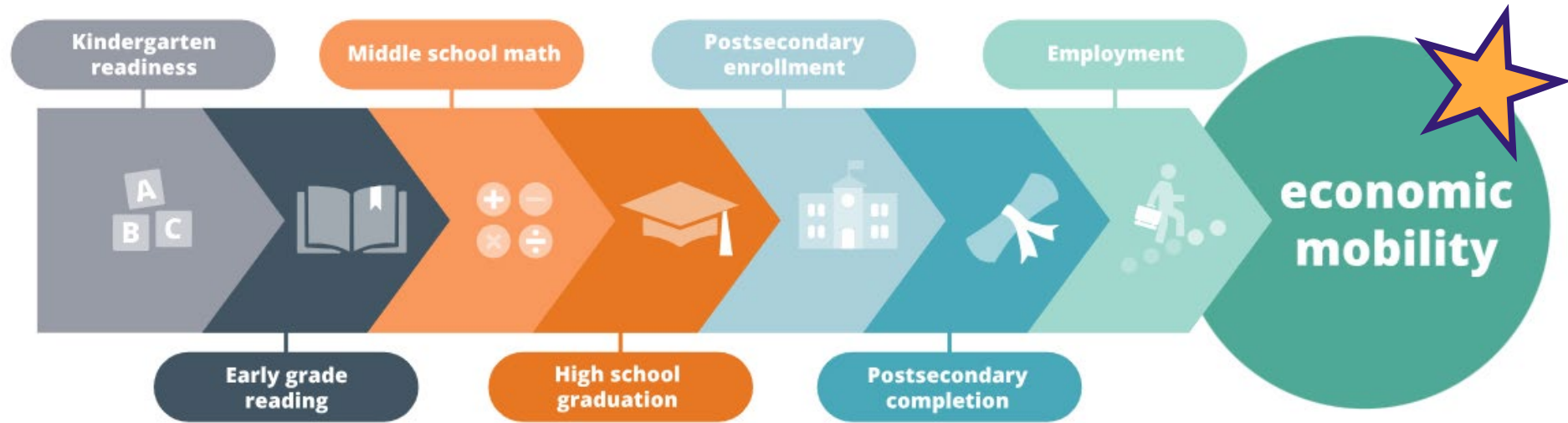
---

**NATIONAL NETWORK**

**.StriveTogether<sup>®</sup>**

**Every child. Cradle to career.**

# FRAMEWORK





# EDUCATION PARTNERSHIPS COALITION OF MINNESOTA (EPC)

## AGENDA:

- An organizational overview
- **An overview of projects**
- Opportunities for questions & discussion



Our children succeed in school and in life. Our communities thrive. Our state is equitable and prosperous for *ALL*.

## **EPC VISION FOR STRATEGIC USE OF DATA**

To better equip our communities with accurate, accessible, and highly actionable data for their locally led discussions, decision-making, and action steps to make systems work better for all young people and families, especially those whom the system is currently not serving effectively.

## COLAB EVIDENCE TO ACTION FORUM

EPC facilitated a workshop for community-based organizations and statewide intermediaries with a focus on integrated data that leads to better education and employment outcomes for young people.

We explored how collaboration and data innovation can strengthen outcomes for Minnesotans.

We produced a list of actionable next steps for policy, innovative ideas, and must haves that advance the culture of strategic data use in MN



## DATA CONVENINGS WITH DCYF

We are co-hosting five regional convenings to deepen awareness of existing data resources, highlight and validate what's already working well, and identify new opportunities to use data more effectively for continuous, data-driven improvement.

We will review available and requestable state data, gather feedback on the utility and limitations of current data assets, and identify opportunities for improvement in data accessibility and use.

## PLACE-BASED PARTNERSHIP WORK WITH MDE

We are expanding the scope of current reporting to MDE and the MN Legislature to be both broader and more specific, building additional evidence for place-based partnership work.

We are seeking opportunities to collaborate across the four place-based partnership grant programs at MDE: EPCs, Full Service Community Schools, 21st Century community Learning Centers, and out-of-school-time grants.

Anyone know an evaluative researcher looking for a project??? ; )



## CCLP WITH MN P20 and CA @ GTCUW; SLEDS, too!

In alliance (EPC, MN P20, and Career Academies at the Greater Twin Cities United Way), we are working statewide to expand the ecosystem and augment the infrastructure to support and drive **career-connected learning pathways** work in MN.

There is SO MUCH great work happening in many places, generally aligned with and informed by each other – but still very “loose.”

Improvements to SLEDS is both part of this work and can also be separate from it (2024 Data Leader Conversations, 2025 Data Roundtable at the Capitol).



## IN A VERY GENERAL SENSE, ACROSS PROJECTS



We see it as one of our key contributions to bring financial (and other) resources to bear upon these projects, whether we hold the grants or not, and “not” is AOK with us!

# EDUCATION PARTNERSHIPS COALITION OF MINNESOTA (EPC)

## AGENDA:

- An organizational overview
- An overview of projects
- **Opportunities for questions & discussion**



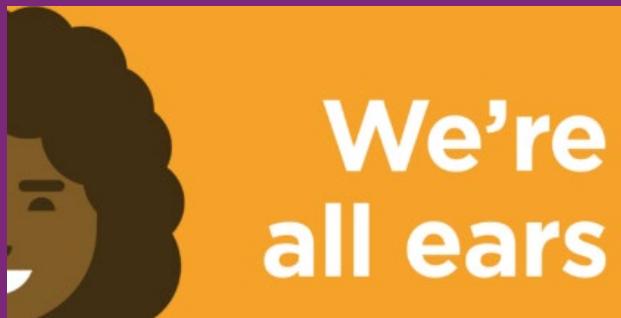
Our children succeed in school and in life. Our communities thrive. Our state is equitable and prosperous for *ALL*.



# EDUCATION PARTNERSHIPS COALITION

*Let's hear from YOU:*

## Q n A/Discussion



Our children succeed in school and in life. Our communities thrive. Our state is equitable and prosperous for ALL.

# EPC

**Want to know more?**

[www.epc-mn.org](http://www.epc-mn.org)

[www.strivetogether.org](http://www.strivetogether.org)

[john@epc-mn.org](mailto:john@epc-mn.org)

# THANK YOU

*Our children succeed in school and in life.  
Our communities thrive.  
Our state is equitable and prosperous for ALL.*

**WEBSITE**  
[www.epc-mn.org](http://www.epc-mn.org)

**PHONE NUMBER**  
612-343-6053

**EMAIL**  
[John.Fanning@gtcuw.org](mailto:John.Fanning@gtcuw.org)