



CHOOSING A CAREER PATHWAY

.....
EXPLORING YOUR OPTIONS FOR SUCCESS

..... 2025 - 2026

CONTENTS

5	WORKFORCE
6	MILITARY
7	SERVICE PROGRAMS
7	GAP YEAR
9	THE BENEFITS OF HIGHER EDUCATION
11	CHOOSING A COLLEGE
12	COLLEGE SEARCH TOOL
16	NORTHWEST REGION SCHOOL PROFILES
20	NORTHEAST REGION SCHOOL PROFILES
23	SOUTHWEST REGION SCHOOL PROFILES
26	SOUTHEAST REGION SCHOOL PROFILES
29	CENTRAL REGION SCHOOL PROFILES
31	METRO REGION SCHOOL PROFILES

THE MOMENT HAS ARRIVED!

IT'S TIME TO DETERMINE HOW YOU'LL BUILD YOUR CAREER.

Whether you're nearing high school graduation or considering a shift in your profession, you may find yourself wondering, "What's next?" With so many options at your fingertips, it may seem daunting to take that next step, but we're here to help.

However you choose to build your skillset — by attending college, entering the workforce, volunteering during a gap year, earning a professional certificate, or serving in the military — this publication has the information you need to start the decision-making process.

The tips here are designed to help you develop a plan for your career and future advancement. Whether you're considering a short-term plan, a long-term plan, or something in between, your decisions now should align with what you hope to achieve. By comparing the facts to your priorities and interests, you'll begin to form a picture of the road ahead and be able to move forward with confidence.

You've got this!

WORKFORCE

Entering the workforce before enrolling in college offers several advantages to help high school graduates make more informed decisions about their future. By working part or full time, you can earn and save money to help cover tuition and reduce the need for student loans. Gaining real-world experience allows you to explore your interests and strengths, helping you decide if college is necessary for your career goals. Many employers also offer tuition assistance programs that cover a portion of your college tuition. This could help you afford to continue your education while working, allowing you to be more intentional in your choice of program as you advance your career.

Additionally, some graduates may discover a passion in a field that does not require a college degree, allowing them to build a fulfilling career without the financial burden of further schooling.



Explore federal data about the workforce

bls.gov



Get help entering the workforce

careerforcemn.com



Start searching for jobs now

careerforcemn.com/CreativeJobSearch



ON-THE-JOB TRAINING

Choosing a career that offers on-the-job training, such as manufacturing, provides high school graduates with a direct and cost-effective path to stable employment. Instead of accumulating student debt, they can start earning a paycheck immediately while gaining valuable hands-on experience. Fields like manufacturing, construction, and skilled trades often provide structured training programs, allowing employees to develop specialized skills while working.

This approach not only builds practical knowledge, but also opens doors for career advancement and higher wages over time. For those who prefer learning by doing rather than sitting in a classroom, on-the-job training offers a great way to enter the workforce, gain expertise, and secure a long term career with growth potential.

.....

APPRENTICESHIPS

Registered apprenticeships allow students to “earn and learn,” because apprentices earn a salary while learning a skilled craft or trade. Apprenticeships generally take two to four years of combined on-the-job training and classroom instruction. Apprenticeship programs are open to anyone with a high school diploma or who is actively pursuing an adult high school diploma or GED.



The Minnesota Department of Labor and Industry has a website dedicated to exploring apprenticeship options: dli.mn.gov/business/workforce/be-apprentice.



ADVANCE YOUR SKILLS WHILE SERVING YOUR COUNTRY

MILITARY

Joining the military is a viable option for high school graduates seeking valuable skills, steady income, and future educational opportunities. Service members gain hands-on experience in various fields, such as engineering, healthcare, cybersecurity, and leadership, which can translate into civilian careers. Additionally, the military instills the values of discipline, team building, and reliability, and provides the opportunity to trust and learn from peers from all backgrounds.

The military also offers financial security early on with a stable salary, housing, and benefits. One of the most significant advantages is the GI Bill, which helps cover tuition, housing, and other education costs for veterans pursuing college or vocational training after their service. For those looking to serve their country while also securing a strong financial and educational foundation, the military can be a rewarding path.



To explore the different branches of the military and view enlistment requirements for each, visit mnaafsc.org/military-service-branches-2 or usa.gov/military-requirements.

DEVELOP THE SKILLS THAT BENEFIT YOU AND OTHERS



SERVICE PROGRAMS

Volunteering during a gap year allows high school graduates to make a positive impact on their communities while developing important skills like teamwork, leadership, and problem-solving. Additionally, service experience looks impressive on college and job applications, demonstrating initiative, compassion, and a commitment to personal and professional growth.

Students can partner with local nonprofits or set their sights on national organizations that may provide opportunities to travel and impact global communities. Research your options according to your personal and professional priorities, contact the organizations and former participants, or follow the organizations on social media to learn more.

BROADEN YOUR VIEWS AND EXPERIENCE NEW PERSPECTIVES

GAP YEAR

A gap year between high school and college is a break from formal education that allows individuals to explore personal interests, gain real-world experience, and prepare for the next stage of their lives. During this time, students may travel, work, volunteer, or pursue internships, all of which can help them develop independence, new skills, and a clearer sense of direction. A well-planned gap year can lead to personal growth, increased motivation, and a better understanding of academic and career goals.

By taking time to gain life experience, students often enter college more focused and prepared, making the transition to higher education smoother and more meaningful.





STEPS TO REMEMBER



DISCUSS YOUR OPTIONS WITH FAMILY, FRIENDS, TEACHERS, OR COUNSELORS.



IF YOU DECIDE SERVICE IS THE PATH FOR YOU, DECIDE WHICH ORGANIZATION OR MILITARY BRANCH YOU WILL JOIN.



IF YOU DECIDE THAT ENTERING THE WORKFORCE IS FOR YOU, CONSIDER A CAREER SCHOOL OR APPRENTICESHIP TO GIVE YOU A LEG UP IN YOUR CHOSEN FIELD.



IF YOU DECIDE HIGHER EDUCATION IS FOR YOU, CONSIDER A TRANSFER PATHWAY LIKE A 2-YEAR DEGREE OR SHORT-TERM CERTIFICATE TO PREPARE YOU FOR LONGER PROGRAMS.



FOR CAREER SCHOOLS AND HIGHER EDUCATION, REMEMBER THESE STEPS:

Details can be found in our Paying for College publication on the page numbers listed below.

- Apply for financial aid (FAFSA OR Dream Act): **PAGES 8-11**
- Review scholarship options and apply for the scholarships you are eligible for: **PAGE 26**
- Compare the costs of institutions and commit to the school of your choice: **PAGE 12**

HIGHER EDUCATION

THE BENEFITS OF HIGHER EDUCATION

College brings you a world of information as you explore your interests and prepare for a career. Additionally, for many students, it's the first time you'll live away from home. That independence allows you to try new things — like sports, volunteering, or internships — and build skills that last a lifetime.

Research shows that as a college certificate or degree holder, you can look forward to more promising job prospects after graduation. Not only do people with degrees generally have higher incomes, they also often report greater job satisfaction and are less likely to be unemployed or underemployed.



QUICK LINK

Paying for
College



1 PROGRAMS

Perhaps the most important thing to consider is program offerings. If you've already decided on your field of study, do your top picks offer that major/minor? And if they do, are those departments academically rigorous enough to challenge you as a student and prepare you for your future career?

If you haven't decided on your major, choosing a college with a wide variety of programs and support for undecided students is a safe bet. Many colleges and universities use the National Career Clusters® Framework to offer exposure to 16 career groups to explore common skill sets and abilities across similar occupations. Opportunities like these will allow you to gain a wealth of information about multiple fields of study and change your mind down the road if necessary.

2 GEOGRAPHIC LOCATION

Minnesota residents can benefit from in-state tuition or the state's tuition reciprocity program with neighboring states.

Some students choose to attend college near their hometown, allowing them to save money by living at home and cutting costs on travel.

You may also want to consider whether you prefer living in a rural area, city, or some place in between. Small college towns typically have an intimate sense of community, whereas schools in large cities can offer more access to internships with large companies and nonprofits.

3 SCHOOL SIZE

Minnesota colleges and universities come in all sizes, from small liberal arts colleges with fewer than 1,000 students to large universities with more than 30,000 students.

Large universities can offer a wide variety of majors and courses, housing options, and activities. Additionally, large schools typically have state-of-the-art research facilities and nationally recognized sports teams. Notably, introductory classes can be large, which some students find exciting while others find overwhelming.

On the other hand, small schools may not offer as many programs as large universities, but they often provide specialized degrees and lots of hands-on learning opportunities. Small colleges can also mean smaller class sizes, allowing you to easily access individualized support from faculty and staff.

4 OVERALL COST

Costs vary from school to school, and there are five main categories of expenses you'll want to keep in mind: tuition and fees, housing and food, books and supplies, personal expenses, and transportation. Costs should be affordable not only now, but in the long term; it can take years to pay off student loans, so be sure to consider each price tag carefully.

It's important to look beyond published tuition prices, since what is listed may not be the actual amount you and your family pay after financial aid and institutional grants. Consider colleges that offer affordable tuition and substantial financial aid packages, which may include grants, scholarships, loans, and work-study opportunities.

The Office of Higher Education offers the in-depth publication, "Paying for College," to help students understand financial aid, grants, scholarships, and more. Visit ohe.mn.gov/outreach-professional-resources/high-school-resources/college-preparation-publications to learn more.

5 WORK/STUDY BALANCE

Working while enrolled in school can help offset costs. If you need to or choose to work, consider whether a college or university offers flexible course scheduling or even on-campus roles or internships that could help you earn a paycheck while learning a relevant skill for your major.

OTHER THINGS TO CONSIDER:

- Campus environment and activities
- Available health and mental health services
- Accommodations for special needs
- Diversity of student population
- Faculty experience and expertise
- Length of time and location of classes
- Graduation statistics for that institution
- Academic reputation and credibility
- Tutoring and academic support services
- Transportation availability and cost
- Campus safety

CHOOSING A COLLEGE

Although there is no magic formula for choosing a college, you can start by asking yourself some questions.

For instance, would you prefer to attend a two-year college or a four-year university? Or, would you prefer a shorter-term option to earn a career-specific certificate? Do you have a preference for a public or private institution?

Public Two-Year Colleges

These institutions accept all students with a high school diploma or GED and offer many educational options. You can earn a credential focusing on a specific occupation, or you can take up to the first two years of courses to complete a bachelor's degree upon transfer to a four-year university. Additionally, some colleges offer opportunities to participate in athletics, clubs, activities, music, or the arts.

Public Four-Year Universities

Minnesota State and the University of Minnesota are the two public systems in Minnesota. Each system is made up of multiple campuses across the state, and each campus offers a wide variety of undergraduate, graduate, and professional degree programs. Most offer a wide range of athletics and intramural sports, as well as programs in theater, music, and the arts. Undergraduate on-campus housing is also available on most campuses.

Private Four-Year Colleges

Most private universities in Minnesota are liberal arts colleges, which emphasize broad knowledge in the arts, sciences, social sciences, and humanities. Many are affiliated with a religious denomination. Some colleges only focus on students seeking a bachelor's degree, while others only offer graduate training or a combination of both.

Private For-Profit Career Colleges

Some colleges focus on one specific career, such as cosmetology schools, while others offer several career programs. Programs generally range from a few months to two years.

Career Schools

Career schools are a great option for high school graduates who want to enter a specific career with short-term, hands-on training. Unlike traditional college programs, trade schools focus on practical skills, allowing students to quickly gain expertise in their chosen field and start working sooner.

There are a wide variety of trade programs available, including aesthetic injection, yoga instruction, dog grooming and training, commercial driving, and many more. These programs often take months rather than years to complete, making them a cost-effective and efficient path to a stable career. For students who prefer a direct route into the workforce without the time and expense of a four-year degree, trade school provides valuable, career-focused education and job opportunities.

TRANSFER PATHWAYS

Transfer pathways make it easy to start at a two-year college and transfer to a four-year institution. Most two-year colleges partner with many four-year colleges. These pathways are designed to save you money and time.

Transfer pathways can be complicated, but with a little bit of extra effort, they can really pay off. Pathways present a direct, guaranteed, and seamless way to transfer academic credits from one institution to another. In Minnesota, many colleges and universities have put in place transfer agreements to accept credits from a different institution. For more tips and advice on how to effectively plan for a transfer pathway, visit myhighered.mn.gov/transfer-students/transfer-pathways.



TYPES OF HIGHER EDUCATION PATHWAYS

Two-Year Institutions

Students can start their higher education journey by attending one of Minnesota's two-year institutions, which include community, technical, and tribal colleges. At a two-year institution, students can complete an associate degree, or they can begin earning credits with the goal of transferring and completing their bachelor's degree at a four-year school.

Short-Term Certificates

Public and private colleges and other training providers offer short-term training programs to help individuals get started in high-demand careers with many opportunities. Programs require a year or less of training and are available in many career fields — from agriculture and natural resources to utilities. To explore just some of your options, students can visit the Minnesota Employment and Economic Development website: apps.deed.state.mn.us/cee.



FIND YOUR WAY WITH OUR COLLEGE SEARCH TOOL

THIS PUBLICATION HAS GONE DIGITAL!



Students can easily navigate the various college options in Minnesota on the MyHigherEd College Search Tool.

For a more in-depth look into making the right college choice for yourself in Minnesota, students can visit the web resource: myhighered.mn.gov/colleges.

With two-year and four-year public and private institutions, as well as accredited cosmetology and specialized trade schools, the College Search Tool provides students with facts on tuition, fees, class sizes, and other helpful information.

This website is a free resource filled with information about higher education in Minnesota. It provides institutional information about public and private postsecondary institutions, including licensed, non-degree private career schools.

MyHigherEd was designed specifically for students — of all ages and all types — parents, and educators to provide information and resources to make their higher education journey as seamless as possible.

Create a profile and narrow down your college search by filtering by your area of study, award level you are seeking, campus setting preferences, location, and more. View estimated costs of attendance, average class sizes, and admissions information.

ADD TO FAVORITES



Decisions are hard, so we make it easy! Save all your top schools during your college search process and compare them side-by-side.

FILTER RESULTS BY:

Areas of Study
Award or Degree Level
Student Faculty Ratio
Campus Setting
Location
Fully Online Programs



WHAT KIND OF INFORMATION CAN I FIND IN THE MYHIGHERED COLLEGE SEARCH TOOL?

EACH MINNESOTA COLLEGE AND UNIVERSITY HAS A PROFILE THAT YOU CAN EXPLORE

Students can explore each Minnesota college and university in depth by selecting an institution’s profile. Each profile provides helpful information and provides estimates that can help you understand the costs of attending the college.

COST

Find out-of-pocket and net price cost information that provides estimates of the total cost of attendance for living on-campus, off-campus, or with family.



Note: The estimated amounts pertain to first-time, full-time undergraduate students and include tuition and fees, housing and meals, transportation, and personal expenses. They are not exact costs, but can be used as a reference for building your annual budget for attending this institution. Keep in mind that most students receive financial aid packages that will lower their out-of-pocket costs, which is reflected in the net price.

COLLEGE PROFILE AND CAMPUS SETTING

Compare colleges and universities according to the student/faculty ratio, average class sizes, and size of the student body. Students can see if a school is located in an urban, city-like atmosphere or a small town or rural setting.

ESTIMATED AMOUNTS OF FINANCIAL AID

There are average amounts of financial aid listed in each college’s profile that can give students an estimated amount they may receive according to income level.

ADMISSION INFORMATION

Students can find information about admissions, including each school’s requirements and application fees, deadlines, and direct contact information.

CREATE A STUDENT PROFILE

Students can create a profile that will provide personalized recommendations and insights according to their career aspirations.



QUICK LINK
.....
MyHigherEd



SCHOOL REGIONS AND PROFILES*

NORTHWEST REGION
Pages 16-19

.....

NORTHEAST REGION
Pages 20-22

.....

SOUTHWEST REGION
Pages 23-25

.....

SOUTHEAST REGION
Pages 26-28

.....

CENTRAL REGION
Pages 29-30

.....

METRO REGION
Pages 31-37

‘WHAT DOES THE COST OF COLLEGE LOOK LIKE?’

THE COST BREAKDOWN FOR EACH
INSTITUTION IS BASED ON THE AVERAGE
NET PRICE.

Average net price takes into consideration how much
financial aid students typically receive to help cover the
cost. This amount is less than the full cost for tuition and
fees, housing, and meals on campus.

Visit myhighered.mn.gov/colleges to learn more about the
cost of each campus you are interested in attending.

SCHOOL PROFILE KEY

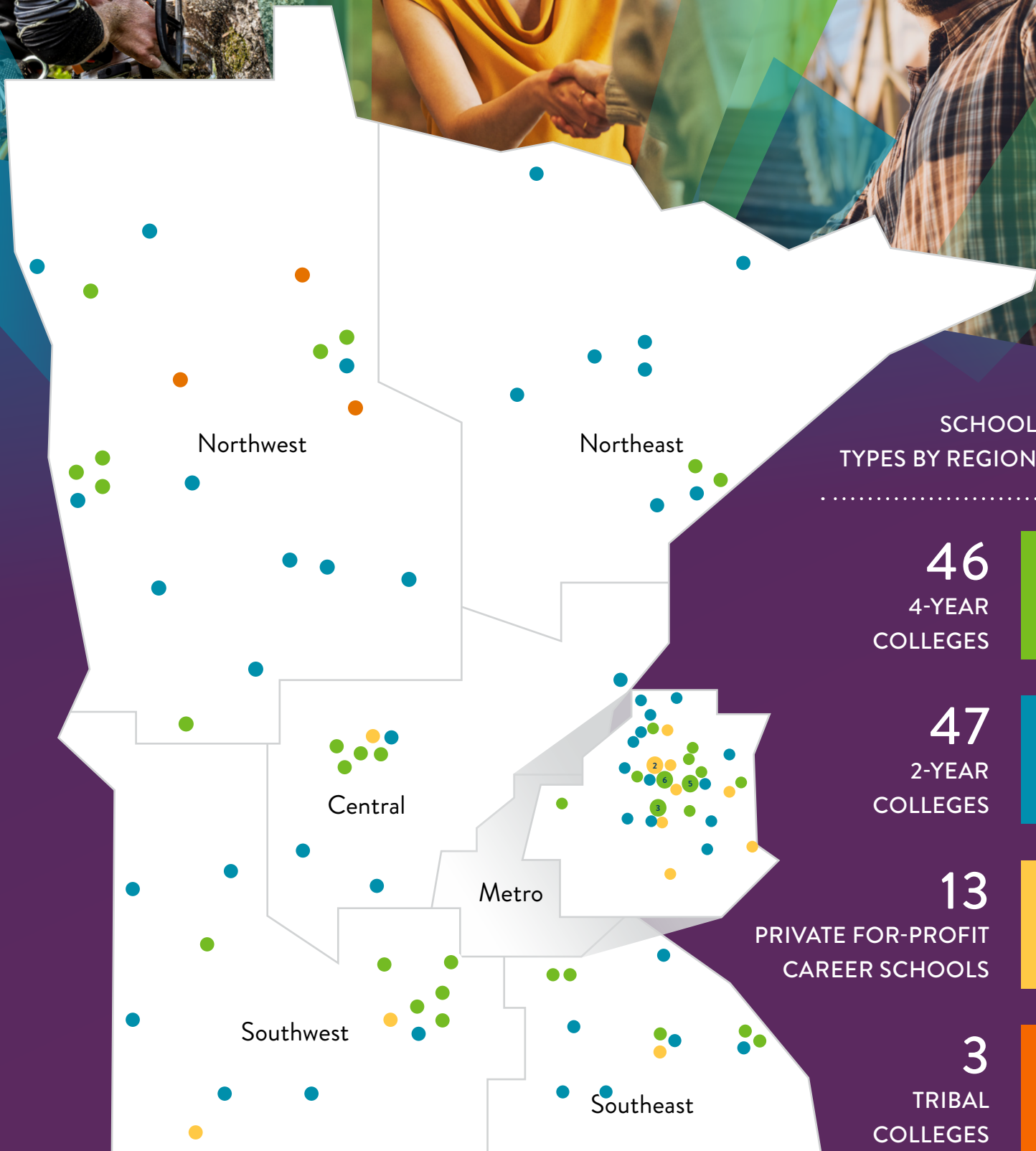
School Cost

- \$ = 5,000-15,000
- \$\$\$ = 16,000-25,000
- \$\$\$\$ = 26,000-35,000
- \$\$\$\$\$ = 36,000-45,000
- \$\$\$\$\$\$ = 46,000+

Direct Admissions Schools



**Not all colleges listed*



SCHOOL
TYPES BY REGION *

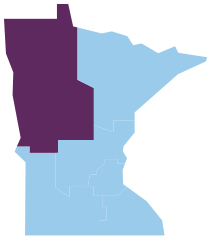
46
4-YEAR
COLLEGES

47
2-YEAR
COLLEGES

13
PRIVATE FOR-PROFIT
CAREER SCHOOLS

3
TRIBAL
COLLEGES

**Not all colleges depicted*



NORTHWEST REGION PROFILES



7
4-YEAR
COLLEGES

10
2-YEAR
COLLEGES

—
PRIVATE FOR-PROFIT
CAREER SCHOOLS

3
TRIBAL
COLLEGES

**Not all colleges listed*

4-YEAR COLLEGES

BEMIDJI STATE UNIVERSITY

1500 Birchmont Drive NE Bemidji, MN 56601-2699

- Bachelor's Degree
- Graduate (Certificates and Degrees)



Public School
\$

Campus Setting Small town/rural
Student/Faculty Ratio 20:1
Average Class Size 22

CONCORDIA COLLEGE

901 South 8th Street Moorhead, MN 56562

- Bachelor's Degree
- Graduate (Certificates and Degrees)



Private School
\$\$

Campus Setting Suburban
Student/Faculty Ratio 12:1
Average Class Size 18

MINNESOTA STATE UNIVERSITY MOORHEAD

1104 7th Avenue South Moorhead, MN 56563

- Associate Degree
- Bachelor's Degree
- Graduate (Certificates and Degrees)



Public School
\$\$

Campus Setting Suburban
Student/Faculty Ratio 19:1
Average Class Size 23

OAK HILLS CHRISTIAN COLLEGE

1600 Oak Hills Road SW Bemidji, MN 56601

- Certificates / Diplomas
- Associate Degree
- Bachelor's Degree

Private School
\$\$

Campus Setting -
Student/Faculty Ratio 10:1
Average Class Size -

UNIVERSITY OF MINNESOTA CROOKSTON

2900 University Avenue Crookston, MN 56716

- Bachelor's Degree



Public School
\$\$

Campus Setting Small town/rural
Student/Faculty Ratio 18:1
Average Class Size 16

UNIVERSITY OF MINNESOTA MORRIS

600 East 4th Street Morris, MN 56267

- Bachelor's Degree



Public School
\$

Campus Setting Small town/rural
Student/Faculty Ratio 9:1
Average Class Size 17

RASMUSSEN UNIVERSITY Moorhead

1250 29th Avenue South Moorhead, MN 56560

- Certificates / Diplomas
- Associate Degree
- Bachelor's Degree
- Graduate (Certificates and Degrees)



Private School
\$\$

Campus Setting Suburban
Student/Faculty Ratio 13:1
Average Class Size 16

2-YEAR COLLEGES

ALEXANDRIA TECHNICAL & COMMUNITY COLLEGE

1601 Jefferson Street Alexandria, MN 56308

- Certificates / Diplomas
- Associate Degree



Public School
\$

Campus Setting Small town/rural
Student/Faculty Ratio 22:1
Average Class Size 18

CENTRAL LAKES COLLEGE Brainerd

501 West College Drive Brainerd, MN 56401

- Certificates / Diplomas
- Associate Degree



Public School
\$

Campus Setting Small town/rural
Student/Faculty Ratio -
Average Class Size -

CENTRAL LAKES COLLEGE Staples

1830 Airport Road Staples, MN 56479

- Certificates / Diplomas
- Associate Degree



Public School
\$

Campus Setting Small town/rural
Student/Faculty Ratio -
Average Class Size -

MINNESOTA STATE COMMUNITY & TECHNICAL COLLEGE Detroit Lakes

900 Highway 34 East Detroit Lakes, MN 56501

- Certificates / Diplomas
- Associate Degree



Public School
\$

Campus Setting Suburban
Student/Faculty Ratio 23:1
Average Class Size 24

MINNESOTA STATE COMMUNITY & TECHNICAL COLLEGE Fergus Falls

1414 College Way Fergus Falls, MN 56537

- Certificates / Diplomas
- Associate Degree



Public School
\$

Campus Setting Small town/rural
Student/Faculty Ratio 23:1
Average Class Size 24

MINNESOTA STATE COMMUNITY & TECHNICAL COLLEGE Moorhead

1900 28th Avenue South Moorhead, MN 56560-4899

- Certificates / Diplomas
- Associate Degree



Public School
\$

Campus Setting Urban
Student/Faculty Ratio 23:1
Average Class Size 24

MINNESOTA STATE COMMUNITY & TECHNICAL COLLEGE Wadena

405 Colfax Avenue SW PO Box 566 Wadena, MN 56482-05669

- Certificates / Diplomas
- Associate Degree



Public School
\$

Campus Setting Small town/rural
Student/Faculty Ratio 23:1
Average Class Size 24

NORTHLAND COMMUNITY & TECHNICAL COLLEGE East Grand Forks

2022 Central Avenue NE East Grand Forks, MN 56721

- Certificates / Diplomas
- Associate Degree



Public School
\$

Campus Setting Urban
Student/Faculty Ratio 18:1
Average Class Size 14

NORTHLAND COMMUNITY & TECHNICAL COLLEGE Thief River Falls

1101 Highway One East Thief River Falls, MN 56701

- Certificates / Diplomas
- Associate Degree



Public School
\$

Campus Setting Small town/rural
Student/Faculty Ratio 18:1
Average Class Size 14

NORTHWEST TECHNICAL COLLEGE

905 Grant Avenue SE Bemidji, MN 56601-49071

- Certificates / Diplomas
- Associate Degree



Public School
\$

Campus Setting Small town/rural
Student/Faculty Ratio 15:1
Average Class Size 14

TRIBAL COLLEGES

LEECH LAKE TRIBAL COLLEGE

6945 Little Wolf Road NW Cass Lake, MN 56633

- Associate Degree

\$

Campus Setting Small town/rural
Student/Faculty Ratio 11:1
Average Class Size 13

RED LAKE NATION COLLEGE

15480 Migizi Drive PO Box 576 Red Lake, MN 56671

- Associate Degree



\$

Campus Setting -
Student/Faculty Ratio -
Average Class Size -

WHITE EARTH TRIBAL & COMMUNITY COLLEGE

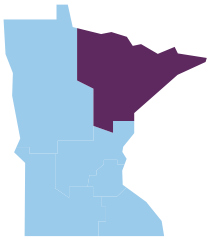
2250 College Road, PO Box 478 Mahanomen, MN 56557

- Associate Degree



\$

Campus Setting Small town/rural
Student/Faculty Ratio 12:1
Average Class Size 25



NORTHEAST REGION PROFILES



2
4-YEAR
COLLEGES

8
2-YEAR
COLLEGES

—
PRIVATE FOR-PROFIT
CAREER SCHOOLS

—
TRIBAL
COLLEGES

**Not all colleges listed*

4-YEAR COLLEGES

COLLEGE OF ST. SCHOLASTICA, THE

1200 Kenwood Avenue Duluth, MN 55811

- Certificates / Diplomas
- Bachelor's Degree
- Graduate (Certificates and Degrees)



Private School
\$

Campus Setting Urban
Student/Faculty Ratio 10:1
Average Class Size 15

UNIVERSITY OF MINNESOTA DULUTH *Classes offered in St. Cloud*

1049 University Drive Duluth, MN 55812

- Certificates / Diplomas
- Bachelor's Degree
- Graduate (Certificates and Degrees)



Public School
\$\$

Campus Setting Suburban
Student/Faculty Ratio 16:1
Average Class Size 27

2-YEAR COLLEGES

FOND DU LAC TRIBAL & COMMUNITY COLLEGE

2101 14th Street Cloquet, MN 55720

- Certificates / Diplomas
- Associate Degree



Public School
\$

Campus Setting Small town/rural
Student/Faculty Ratio 14:1
Average Class Size 25

LAKE SUPERIOR COLLEGE

2101 Trinity Road Duluth, MN 55811-3399

- Certificates / Diplomas
- Associate Degree



Public School
\$

Campus Setting Urban
Student/Faculty Ratio 16:1
Average Class Size 17

MINNESOTA NORTH COLLEGE *Hibbing*

1515 East 25th Street Hibbing, MN 55746

- Certificates / Diplomas
- Associate Degree



Public School
\$

Campus Setting Small town/rural
Student/Faculty Ratio 17:1
Average Class Size 21

MINNESOTA NORTH COLLEGE *Itasca*

1851 US-169 Grand Rapids, MN 55744

- Certificates / Diplomas
- Associate Degree



Public School
\$

Campus Setting Small town/rural
Student/Faculty Ratio 17:1
Average Class Size 21

MINNESOTA NORTH COLLEGE *Mesabi Range - Eveleth*

1100 Industrial Park Drive Eveleth, MN 55734-0648

- Certificates / Diplomas
- Associate Degree



Public School
\$

Campus Setting Small town/rural
Student/Faculty Ratio 17:1
Average Class Size 21

MINNESOTA NORTH COLLEGE Mesabi Range - Virginia

1001 Chestnut Street West Virginia, MN 55792

- Certificates / Diplomas
- Associate Degree



Public School
\$

Campus Setting Small town/rural
Student/Faculty Ratio 17:1
Average Class Size 21

MINNESOTA NORTH COLLEGE Rainy River

1501 US-71 International Falls, MN 56649

- Certificates / Diplomas
- Associate Degree



Public School
\$

Campus Setting Small town/rural
Student/Faculty Ratio 17:1
Average Class Size 21

MINNESOTA NORTH COLLEGE Vermillion

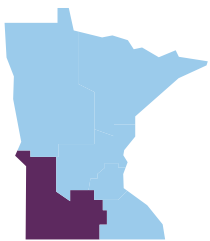
1900 E. Camp St. Ely, MN 55731

- Certificates / Diplomas
- Associate Degree



Public School
\$

Campus Setting Small town/rural
Student/Faculty Ratio 17:1
Average Class Size 21



SOUTHWEST REGION PROFILES



6
4-YEAR
COLLEGES

6
2-YEAR
COLLEGES

2
PRIVATE FOR-PROFIT
CAREER SCHOOLS

—
TRIBAL
COLLEGES

**Not all colleges listed*

4-YEAR COLLEGES

BETHANY LUTHERAN COLLEGE

700 Luther Drive Mankato, MN 56001

- Certificates / Diplomas
- Bachelor's Degree
- Graduate (Certificates and Degrees)



Private School
\$\$

Campus Setting Small town/rural
Student/Faculty Ratio 12:1
Average Class Size 16

GUSTAVUS ADOLPHUS COLLEGE

800 West College Avenue St. Peter, MN 56082

- Bachelor's Degree
- Graduate (Certificates and Degrees)



Private School
\$\$

Campus Setting Small town/rural
Student/Faculty Ratio 12:1
Average Class Size 18

MARTIN LUTHER COLLEGE

1995 Luther Court New Ulm, MN 56073

- Certificates / Diplomas
- Bachelor's Degree
- Graduate (Certificates and Degrees)

Private School
\$\$

Campus Setting Small town/rural
Student/Faculty Ratio 12:1
Average Class Size 25

MINNESOTA STATE UNIVERSITY MANKATO

228 Wiecking Center Mankato, MN 56001

- Associate Degree
- Bachelor's Degree
- Graduate (Certificates and Degrees)



Public School
\$\$

Campus Setting Suburban
Student/Faculty Ratio 21:1
Average Class Size -

RASMUSSEN UNIVERSITY Mankato

1400 Madison Avenue Mankato, MN 56001

- Certificates / Diplomas
- Associate Degree
- Bachelor's Degree
- Graduate (Certificates and Degrees)



Private School
\$\$

Campus Setting Suburban
Student/Faculty Ratio 13:1
Average Class Size 16

SOUTHWEST MINNESOTA STATE UNIVERSITY

1501 State Street Marshall, MN 56258

- Bachelor's Degree
- Graduate (Certificates and Degrees)



Public School
\$

Campus Setting Small town/rural
Student/Faculty Ratio 14:1
Average Class Size 16

2-YEAR COLLEGES

MINNESOTA WEST COMMUNITY & TECHNICAL COLLEGE Canby

1011 1st Street West Canby, MN 56220

- Certificates / Diplomas
- Associate Degree



Public School
\$

Campus Setting -
Student/Faculty Ratio -
Average Class Size 20

MINNESOTA WEST COMMUNITY & TECHNICAL COLLEGE Granite Falls

1593 11th Avenue Granite Falls, MN 56241

- Certificates / Diplomas
- Associate Degree



Public School
\$

Campus Setting Small town/rural
Student/Faculty Ratio -
Average Class Size 20

MINNESOTA WEST COMMUNITY & TECHNICAL COLLEGE Jackson

401 West Street Jackson, MN 56143

- Certificates / Diplomas
- Associate Degree



Public School
\$

Campus Setting -
Student/Faculty Ratio -
Average Class Size 20

MINNESOTA WEST COMMUNITY & TECHNICAL COLLEGE Pipestone

1314 North Hiawatha Avenue PO Box 250 Pipestone, MN 56164-0250

- Certificates / Diplomas
- Associate Degree



Public School
\$

Campus Setting -
Student/Faculty Ratio -
Average Class Size 20

MINNESOTA WEST COMMUNITY & TECHNICAL COLLEGE Worthington

1450 Collegeway Worthington, MN 56187

- Certificates / Diplomas
- Associate Degree



Public School
\$

Campus Setting -
Student/Faculty Ratio -
Average Class Size 20

SOUTH CENTRAL COLLEGE Mankato

1920 Lee Boulevard North Mankato, MN 56003

- Certificates / Diplomas
- Associate Degree



Public School
\$

Campus Setting Urban
Student/Faculty Ratio -
Average Class Size -

PRIVATE FOR-PROFIT CAREER SCHOOLS

AVALON SCHOOL OF COSMETOLOGY

1428 North McMillan Street PO Box 1022 Worthington, MN 56187

- Certificates / Diplomas

\$

Campus Setting -
Student/Faculty Ratio 9:1
Average Class Size 2

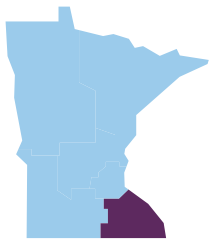
NOVA ACADEMY OF COSMETOLOGY Mankato

500 Raintree Road, Suite 10 Mankato, MN 56001

- Certificates / Diplomas

\$\$

Campus Setting Suburban
Student/Faculty Ratio 20:1
Average Class Size 10



SOUTHEAST REGION PROFILES



QUICK LINK

MyHigherEd



5
4-YEAR
COLLEGES

6
2-YEAR
COLLEGES

1
PRIVATE FOR-PROFIT
CAREER SCHOOLS

—
TRIBAL
COLLEGES

**Not all colleges listed*

4-YEAR COLLEGES

CARLETON COLLEGE

One North College Street Northfield, MN 55057

- Bachelor's Degree

Private School
\$\$\$

Campus Setting Small town/rural
Student/Faculty Ratio 8:1
Average Class Size 16

SAINT MARY'S UNIVERSITY OF MINNESOTA

700 Terrace Heights Winona, MN 55987

- Certificates / Diplomas
- Bachelor's Degree
- Graduate (Certificates and Degrees)



Private School
\$\$

Campus Setting Small town/rural
Student/Faculty Ratio 18:1
Average Class Size 18

ST. OLAF COLLEGE

1520 St. Olaf Avenue Northfield, MN 55057-1098

- Bachelor's Degree

Private School
\$\$\$

Campus Setting Small town/rural
Student/Faculty Ratio 12:1
Average Class Size 22

UNIVERSITY OF MINNESOTA ROCHESTER

111 South Broadway, Suite 300 Rochester, MN 55904

- Bachelor's Degree



Public School
\$

Campus Setting Urban
Student/Faculty Ratio 13:1
Average Class Size 18

WINONA STATE UNIVERSITY

8th and Johnson Streets PO Box 5838 Winona, MN 55987

- Bachelor's Degree
- Graduate (Certificates and Degrees)



Public School
\$\$

Campus Setting Small town/rural
Student/Faculty Ratio 17:1
Average Class Size 24

2-YEAR COLLEGES

MINNESOTA STATE COLLEGE SOUTHEAST Red Wing

308 Pioneer Road Red Wing, MN 55066

- Certificates / Diplomas
- Associate Degree



Public School
\$\$

Campus Setting -
Student/Faculty Ratio 18:1
Average Class Size 15

MINNESOTA STATE COLLEGE SOUTHEAST Winona

1250 Homer Road PO Box 409 Winona, MN 55987

- Certificates / Diplomas
- Associate Degree



Public School
\$\$

Campus Setting -
Student/Faculty Ratio 18:1
Average Class Size 15

RIVERLAND COMMUNITY COLLEGE Albert Lea

2200 Riverland Drive Albert Lea, MN 56007

- Certificates / Diplomas
- Associate Degree



Public School
\$

Campus Setting Small town/rural
Student/Faculty Ratio 23:1
Average Class Size 22

RIVERLAND COMMUNITY COLLEGE Austin

1900 8th Avenue NW Austin, MN 55912

- Certificates / Diplomas
- Associate Degree



Public School
\$

Campus Setting Small town/rural
Student/Faculty Ratio 23:1
Average Class Size 22

RIVERLAND COMMUNITY COLLEGE Owatonna

965 Alexander Drive SW Owatonna, MN 55060

- Certificates / Diplomas
- Associate Degree



Public School
\$

Campus Setting Suburban
Student/Faculty Ratio 23:1
Average Class Size 22

ROCHESTER COMMUNITY & TECHNICAL COLLEGE

851 30th Avenue SE Rochester, MN 55904-4999

- Certificates / Diplomas
- Associate Degree



Public School
\$

Campus Setting Urban
Student/Faculty Ratio 17:1
Average Class Size 26

PRIVATE FOR-PROFIT CAREER SCHOOLS

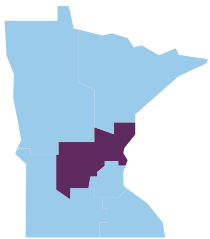
NOVA ACADEMY OF COSMETOLOGY Rochester

5979 Bandel Road NW Rochester, MN 55901

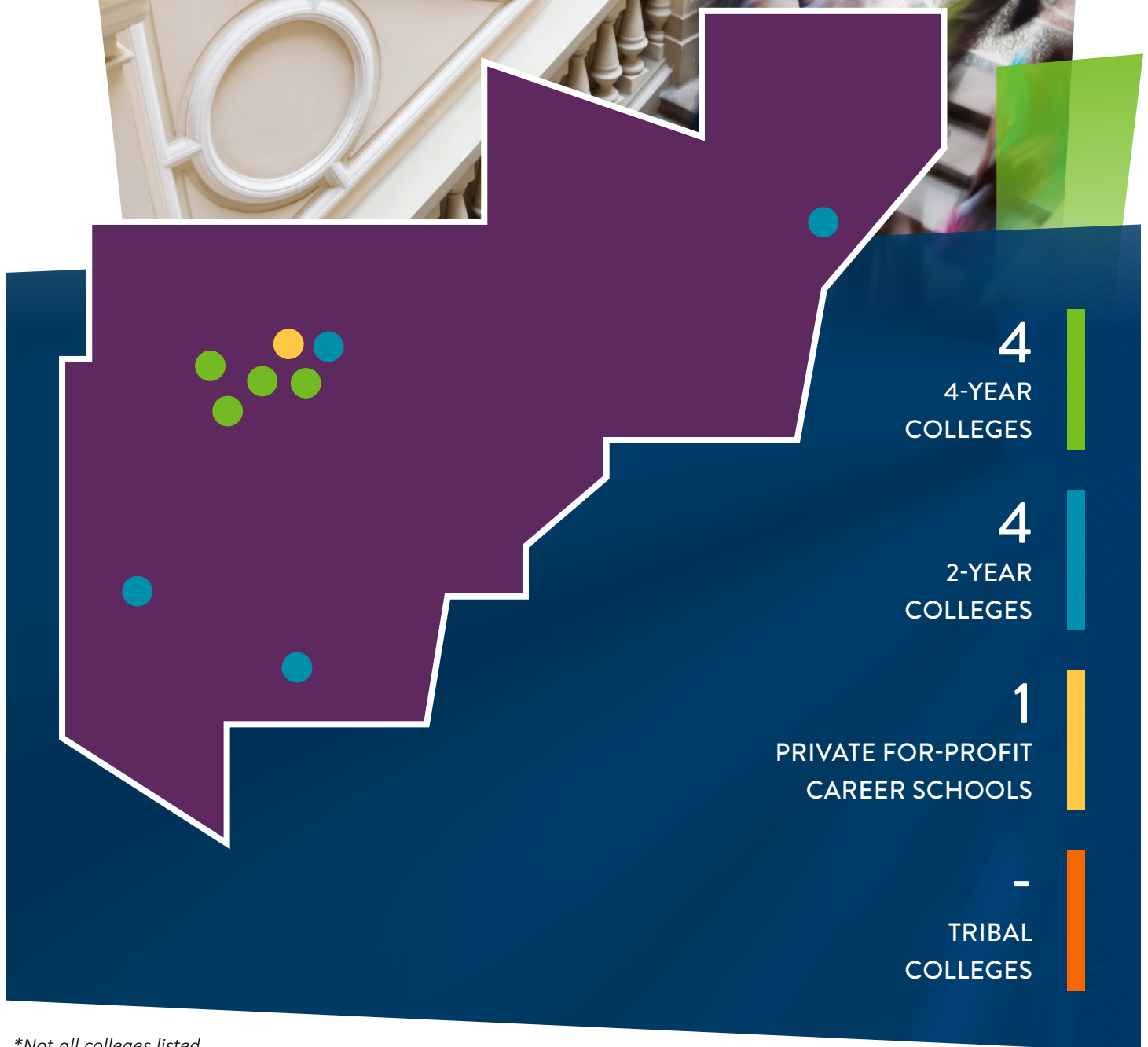
- Certificates / Diplomas

\$\$

Campus Setting Suburban
Student/Faculty Ratio 20:1
Average Class Size 10



CENTRAL REGION PROFILES



**Not all colleges listed*

4-YEAR COLLEGES

COLLEGE OF SAINT BENEDICT

37 South College Avenue St. Joseph, MN 56374-2099

- Bachelor's Degree
- Graduate (Certificates and Degrees)



Private School
\$\$\$

Campus Setting Small town/rural
Student/Faculty Ratio 11:1
Average Class Size 16

RASMUSSEN UNIVERSITY St. Cloud

226 Park Avenue South St. Cloud, MN 56301

- Certificates / Diplomas
- Associate Degree
- Bachelor's Degree
- Graduate (Certificates and Degrees)



Private School
\$\$

Campus Setting Suburban
Student/Faculty Ratio 13:1
Average Class Size 16

SAINT JOHN'S UNIVERSITY

2850 Abbey Plaza, PO Box 2000 Collegeville, MN 56321

- Bachelor's Degree
- Graduate (Certificates and Degrees)



Private School
\$\$\$

Campus Setting Small town/rural
Student/Faculty Ratio 12:1
Average Class Size 16

ST. CLOUD STATE UNIVERSITY

720 4th Avenue South St. Cloud, MN 56301-4498

- Bachelor's Degree
- Graduate (Certificates and Degrees)



Public School
\$\$\$

Campus Setting Suburban
Student/Faculty Ratio 20:1
Average Class Size 18

2-YEAR COLLEGES

PINE TECHNICAL & COMMUNITY COLLEGE

900 4th Street SE Pine City, MN 55063

- Certificates / Diplomas
- Associate Degree



Public School
\$

Campus Setting Small town/rural
Student/Faculty Ratio 17:1
Average Class Size 18

RIDGEWATER COLLEGE Hutchinson

2 Century Avenue SE Hutchinson, MN 55350

- Certificates / Diplomas
- Associate Degree



Public School
\$

Campus Setting Small town/rural
Student/Faculty Ratio -
Average Class Size -

RIDGEWATER COLLEGE Willmar

2101 15th Avenue NW Willmar, MN 562010

- Certificates / Diplomas
- Associate Degree



Public School
\$

Campus Setting Small town/rural
Student/Faculty Ratio -
Average Class Size -

ST. CLOUD TECHNICAL & COMMUNITY COLLEGE

1540 Northway Drive St. Cloud, MN 56303-1240

- Certificates / Diplomas
- Associate Degree



Public School
\$

Campus Setting Suburban
Student/Faculty Ratio 21:1
Average Class Size 21

PRIVATE FOR-PROFIT CAREER SCHOOLS

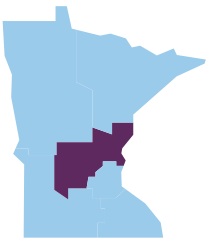
MODEL COLLEGE OF HAIR DESIGN

201 8th Avenue South St. Cloud, MN 56301

- Certificates / Diplomas

\$

Campus Setting -
Student/Faculty Ratio 1:1
Average Class Size 10



METRO REGION PROFILES



22
4-YEAR
COLLEGES

13
2-YEAR
COLLEGES

9
PRIVATE FOR-PROFIT
CAREER SCHOOLS

—
TRIBAL
COLLEGES

**Not all colleges listed*

4-YEAR COLLEGES

ACADEMY COLLEGE

1600 West 82nd Street Suite 100 Bloomington, MN 55431

- Certificates / Diplomas
- Associate Degree
- Bachelor's Degree

Private School
\$\$\$

Campus Setting Suburban
Student/Faculty Ratio 10:1
Average Class Size 8

AUGSBURG UNIVERSITY

2211 Riverside Avenue South Minneapolis, MN 55454-1398

- Bachelor's Degree
- Graduate (Certificates and Degrees)



Private School
\$\$

Campus Setting Urban
Student/Faculty Ratio 14:1
Average Class Size 20

BETHEL UNIVERSITY

3900 Bethel Drive St. Paul, MN 55112

- Certificates / Diplomas
- Associate Degree
- Bachelor's Degree
- Graduate (Certificates and Degrees)



Private School
\$\$\$

Campus Setting Suburban
Student/Faculty Ratio 14:1
Average Class Size 18

CONCORDIA UNIVERSITY-ST. PAUL

1282 Concordia Avenue St. Paul, MN 55104

- Associate Degree
- Bachelor's Degree
- Graduate (Certificates and Degrees)



Private School
\$\$

Campus Setting Urban
Student/Faculty Ratio 16:1
Average Class Size 17

CROWN COLLEGE

8700 College View Drive St. Bonifacius, MN 55375-9001

- Certificates / Diplomas
- Associate Degree
- Bachelor's Degree
- Graduate (Certificates and Degrees)

Private School
\$\$

Campus Setting Suburban
Student/Faculty Ratio 18:1
Average Class Size 21

DUNWOODY COLLEGE OF TECHNOLOGY

818 Dunwoody Boulevard Minneapolis, MN 55403

- Certificates / Diplomas
- Associate Degree
- Bachelor's Degree



Private School
\$\$

Campus Setting Urban
Student/Faculty Ratio 11:1
Average Class Size 12

HAMLIN UNIVERSITY

1536 Hewitt Avenue St. Paul, MN 55104

- Certificates / Diplomas
- Bachelor's Degree
- Graduate (Certificates and Degrees)



Private School
\$\$

Campus Setting Urban
Student/Faculty Ratio 13:1
Average Class Size 23

HERZING UNIVERSITY

435 Ford Road Suite 1000 St. Louis Park, MN 55426

- Certificates / Diplomas
- Associate Degree
- Bachelor's Degree
- Graduate (Certificates and Degrees)

Private School
\$\$

Campus Setting Suburban
Student/Faculty Ratio 25:1
Average Class Size 25

INSTITUTE OF PRODUCTION AND RECORDING, THE

300 North 1st Ave, Suite 100 Minneapolis, MN 55401

- Certificates / Diplomas
- Associate Degree
- Bachelor's Degree

Private School
\$\$

Campus Setting -
Student/Faculty Ratio 14:1
Average Class Size 12

MACALESTER COLLEGE

1600 Grand Avenue St. Paul, MN 55105

- Bachelor's Degree

Private School
\$\$\$\$

Campus Setting Urban
Student/Faculty Ratio 10:1
Average Class Size 17

METROPOLITAN STATE UNIVERSITY

700 East 7th Street St. Paul, MN 55106-5000

- Bachelor's Degree
- Graduate (Certificates and Degrees)



Public School
\$\$

Campus Setting Urban
Student/Faculty Ratio 17:1
Average Class Size 21

MINNEAPOLIS COLLEGE OF ART AND DESIGN

2501 Stevens Avenue South Minneapolis, MN 55404

- Associate Degree
- Bachelor's Degree
- Graduate (Certificates and Degrees)



Private School
\$\$\$

Campus Setting Urban
Student/Faculty Ratio 9:1
Average Class Size 17

NORTH CENTRAL UNIVERSITY

910 Elliot Avenue Minneapolis, MN 55404

- Certificates / Diplomas
- Associate Degree
- Bachelor's Degree
- Graduate (Certificates and Degrees)

Private School
\$\$

Campus Setting Urban
Student/Faculty Ratio 16:1
Average Class Size 25

NORTHWESTERN HEALTH SCIENCES UNIVERSITY

2501 West 84th Street Door Suite 1 Bloomington, MN 55431

- Certificates / Diplomas
- Associate Degree
- Bachelor's Degree
- Graduate (Certificates and Degrees)



Private School
\$\$\$

Campus Setting Suburban
Student/Faculty Ratio 4:1
Average Class Size 13

RASMUSSEN UNIVERSITY Bloomington

4400 78th Street Floor 6 Bloomington, MN 55435

- Certificates / Diplomas
- Associate Degree
- Bachelor's Degree
- Graduate (Certificates and Degrees)

Private School
\$\$

Campus Setting Suburban
Student/Faculty Ratio 13:1
Average Class Size 16

RASMUSSEN UNIVERSITY Eagan

1305 Corporate Center Drive, Suite 200 Eagan, MN 55122

- Certificates / Diplomas
- Associate Degree
- Bachelor's Degree
- Graduate (Certificates and Degrees)

Private School
\$\$

Campus Setting Suburban
Student/Faculty Ratio 13:1
Average Class Size 16

RASMUSSEN UNIVERSITY Hennepin/Anoka

5555 96th Avenue North Brooklyn Park, MN 44553

- Certificates / Diplomas
- Associate Degree
- Bachelor's Degree
- Graduate (Certificates and Degrees)

Private School
\$\$

Campus Setting Suburban
Student/Faculty Ratio 13:1
Average Class Size 16

RASMUSSEN UNIVERSITY Lake Elmo

8565 Eagle Point Circle Lake Elmo, MN 55042

- Certificates / Diplomas
- Associate Degree
- Bachelor's Degree
- Graduate (Certificates and Degrees)

Private School
\$\$

Campus Setting Suburban
Student/Faculty Ratio 13:1
Average Class Size 16

ST. CATHERINE UNIVERSITY

2004 Randolph Avenue St. Paul, MN 55105

- Certificates / Diplomas
- Associate Degree
- Bachelor's Degree
- Graduate (Certificates and Degrees)



Private School
\$\$

Campus Setting Urban
Student/Faculty Ratio 9:1
Average Class Size 17

UNIVERSITY OF MINNESOTA TWIN CITIES

202 Morrill Hall 100 Church Street SE Minneapolis, MN 55455

- Certificates / Diplomas
- Bachelor's Degree
- Graduate (Certificates and Degrees)

Public School
\$\$

Campus Setting Urban
Student/Faculty Ratio 17:1
Average Class Size 30

UNIVERSITY OF NORTHWESTERN – ST. PAUL

3003 Snelling Avenue North Roseville, MN 55113-1598

- Certificates / Diplomas
- Associate Degree
- Bachelor's Degree
- Graduate (Certificates and Degrees)

Private School
\$\$

Campus Setting Suburban
Student/Faculty Ratio 15:1
Average Class Size 22

UNIVERSITY OF ST. THOMAS

2115 Summit Avenue St. Paul, MN 55105-1096

- Certificates / Diplomas
- Associate Degree
- Bachelor's Degree
- Graduate (Certificates and Degrees)

DA Private School
\$\$\$

Campus Setting Urban
Student/Faculty Ratio 13:1
Average Class Size 22

2-YEAR COLLEGES

ANOKA TECHNICAL COLLEGE

1355 West Highway 10 Anoka, MN 55303

- Certificates / Diplomas
- Associate Degree

DA Public School
\$

Campus Setting Suburban
Student/Faculty Ratio 18:1
Average Class Size 15

ANOKA-RAMSEY COMMUNITY COLLEGE Cambridge

300 Spirit River Drive South Cambridge, MN 55008

- Certificates / Diplomas
- Associate Degree

DA Public School
\$

Campus Setting Suburban
Student/Faculty Ratio -
Average Class Size -

ANOKA-RAMSEY COMMUNITY COLLEGE Coon Rapids

11200 Mississippi Boulevard Coon Rapids, MN 55433

- Certificates / Diplomas
- Associate Degree

DA Public School
\$

Campus Setting Suburban
Student/Faculty Ratio -
Average Class Size -

CENTURY COLLEGE

3300 Century Avenue North White Bear Lake, MN 55110

- Certificates / Diplomas
- Associate Degree

DA Public School
\$

Campus Setting Suburban
Student/Faculty Ratio 24:1
Average Class Size 24

DAKOTA COUNTY TECHNICAL COLLEGE

1300 145th Street East Rosemount, MN 55068

- Certificates / Diplomas
- Associate Degree

DA Public School
\$

Campus Setting Suburban
Student/Faculty Ratio 34:1
Average Class Size 24

INVER HILLS COMMUNITY COLLEGE

2500 80th Street East Inver Grove Heights, MN 55076

- Certificates / Diplomas
- Associate Degree



Public School
\$

Campus Setting Suburban
Student/Faculty Ratio 26:1
Average Class Size 25

HENNEPIN TECHNICAL COLLEGE Brooklyn Park

9000 Brooklyn Boulevard Brooklyn Park, MN 55445

- Certificates / Diplomas
- Associate Degree



Public School
\$

Campus Setting Suburban
Student/Faculty Ratio -
Average Class Size -

HENNEPIN TECHNICAL COLLEGE Eden Prairie

13100 College View Drive Eden Prairie, MN 55347-2600

- Certificates / Diplomas
- Associate Degree



Public School
\$

Campus Setting Suburban
Student/Faculty Ratio -
Average Class Size -

HENNEPIN TECHNICAL COLLEGE Plymouth - Customized Training Services

1820 N. Xenium Lane Plymouth, MN 55441

- Certificates / Diplomas
- Associate Degree



Public School
\$

Campus Setting Urban
Student/Faculty Ratio -
Average Class Size -

MINNEAPOLIS COLLEGE

1501 Hennepin Avenue Minneapolis, MN 55403

- Certificates / Diplomas
- Associate Degree



Public School
\$

Campus Setting Urban
Student/Faculty Ratio 19:1
Average Class Size 24

NORMANDALE COMMUNITY COLLEGE

9700 France Avenue South Bloomington, MN 55431

- Certificates / Diplomas
- Associate Degree



Public School
\$

Campus Setting Suburban
Student/Faculty Ratio 27:1
Average Class Size 27

NORTH HENNEPIN COMMUNITY COLLEGE

7411 85th Avenue North Brooklyn Park, MN 55445

- Certificates / Diplomas
- Associate Degree



Public School
\$

Campus Setting Suburban
Student/Faculty Ratio 24:1
Average Class Size 24

SAINT PAUL COLLEGE

235 Marshall Avenue St. Paul, MN 55102

- Certificates / Diplomas
- Associate Degree



Public School
\$

Campus Setting Urban
Student/Faculty Ratio 24:1
Average Class Size 21

PRIVATE FOR-PROFIT CAREER SCHOOLS

EMPIRE BEAUTY SCHOOL Bloomington

9749 Lyndale Avenue South Bloomington, MN 55420

- Certificates / Diplomas

\$\$

Campus Setting Urban
Student/Faculty Ratio 20:1
Average Class Size 20

EMPIRE BEAUTY SCHOOL Spring Lake Park

8205 University Avenue Spring Lake Park, MN 55432

- Certificates / Diplomas

\$\$

Campus Setting Suburban
Student/Faculty Ratio 20:1
Average Class Size 20

HASTINGS BEAUTY SCHOOL INC.

221 East Second Street Hastings, MN 55033

- Certificates / Diplomas

\$\$

Campus Setting Suburban
Student/Faculty Ratio 12:1
Average Class Size 12

MINNESOTA SCHOOL OF BARBERING

3615 East Lake Street Minneapolis, MN 55406

- Certificates / Diplomas

\$\$

Campus Setting Urban
Student/Faculty Ratio 20:1
Average Class Size 20

MINNESOTA SCHOOL OF BEAUTY

20186 Heritage Drive Lakeville, MN 55044

- Certificates / Diplomas

\$\$

Campus Setting Suburban
Student/Faculty Ratio -
Average Class Size 15

SUMMIT ACADEMY OIC

935 Olson Memorial Highway Minneapolis, MN 554054

- Certificates / Diplomas

\$\$

Campus Setting Urban
Student/Faculty Ratio 8:1
Average Class Size 25

SUMMIT ACADEMY OIC Extension Campus – North Star Innovation Center

1256 Penn Avenue N Minneapolis, MN 55411

- Certificates / Diplomas

\$\$

Campus Setting Urban
Student/Faculty Ratio 8:1
Average Class Size 25

AVEDA ARTS AND SCIENCES INSTITUTE MINNEAPOLIS

400 Central Avenue SE Minneapolis, MN 55414

- Certificates / Diplomas

\$\$

Campus Setting Urban
Student/Faculty Ratio -
Average Class Size -

NOVA ACADEMY OF COSMETOLOGY Woodbury

1750 Weir Drive Woodbury, MN 55125

- Certificates / Diplomas

\$\$

Campus Setting Suburban
Student/Faculty Ratio 20:1
Average Class Size 10

1450 Energy Park Drive, Suite 350
Saint Paul, MN 55108-5227

Phone: (651) 642-0567
Toll Free: (800) 627-3529
Fax: (651) 642-0675
Email: info.ohe@state.mn.us

ohe.mn.gov

© 2025 Minnesota Office of Higher Education